

# Chart Pattern Dashboard Indicator User Guide

In this manual we describe installation process of Chart Pattern Dashboard Indicator for MetaTrader 4 trading platform build 600 or later.

Our indicator works on MetaTrader4. You need to install MetaTrader4 first if you haven't.

Then, follow the steps below to install our indicator:

Step 1: Install The Indicator:

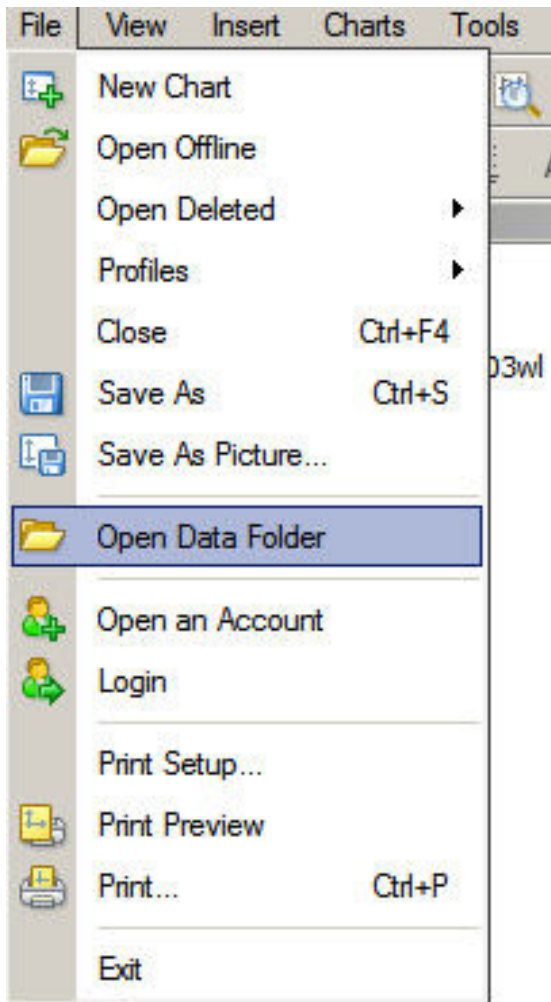
First, you should have already downloaded the ZIP file containing all the installation files from your members area and unzip it into your desktop. Inside that ZIP file, there's this file:

**ChartPatternDashboard.ex4**

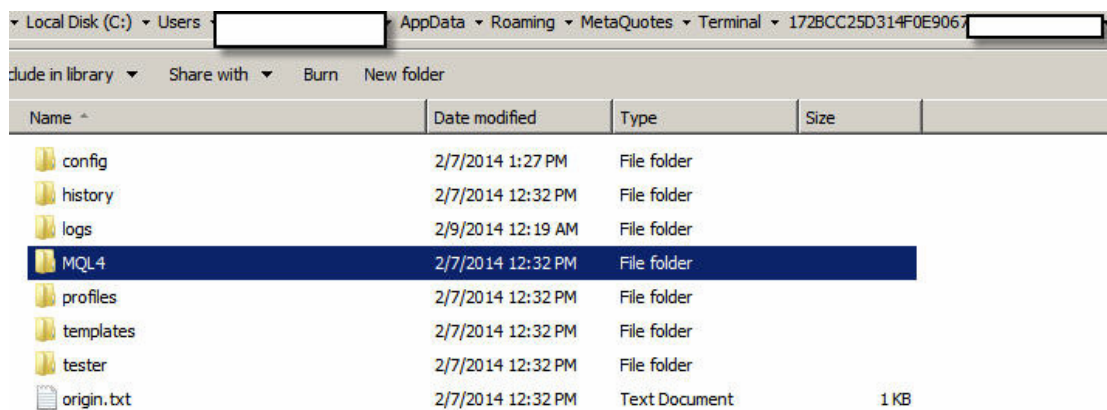
**Next:**

***Open your MT 4 trading platform***

Click File --> Open Data Folder

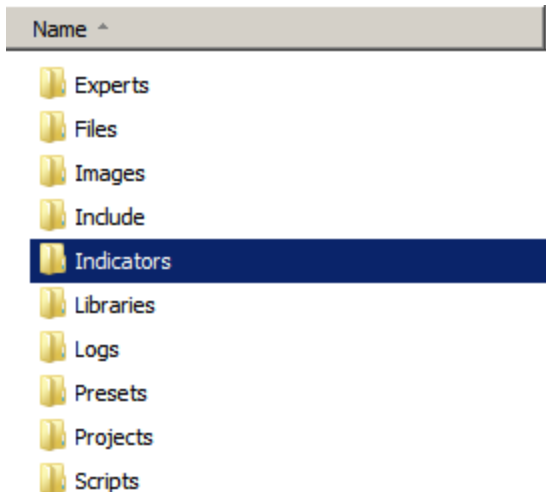


Once you have that data folder open, locate the MQL4 folder inside it. Then open that MQL4 folder:



Inside that MQL4 folder, you will see the Indicators folder , this is

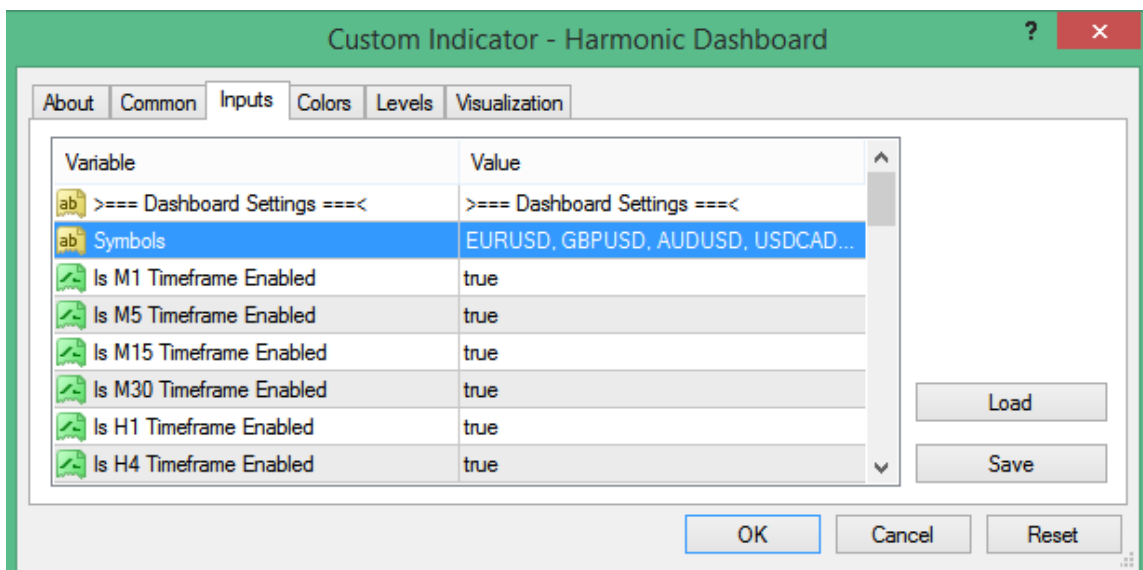
where you need to copy the **ChartPatternDashboard.ex4** from your zip file to.



### NEXT STEP:

To insert the indicator to your chart, click Insert --> Indicators --> Custom, then choose **Chart PatternDashboard**

### IMPORTANT PARAMETER:



To specify which pair you want the indicator scan, add the symbol

name, like EURUSD, to the Symbols parameter. You can enter as many pairs as you like, separated by a comma, like this:

EURUSD,GBPUSD,USDCAD,USDJPY

Please note that some brokers are using different names for currency pairs, they may have suffix or prefix, for example "EURUSDecn" or "EURUSDpro", In that case, you should enter the symbol name exactly the same as what your broker uses

For example, if your broker uses EURUSDpro and GBPUSDpro then you must enter in the Symbols parameter: EURUSDpro,GBPUSDpro